

# REFERENCE TEST BLOCK No.1

## ACCORDING TO EN ISO 9934-2 APP.B

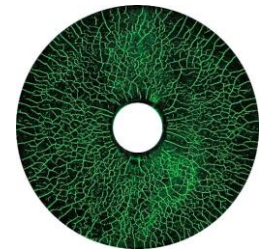
### INCL. CERTIFICATE



Version 4 | 24.02.2022 | Page 1/1

#### DESCRIPTION

The reference test block No.1 (also known as MTU-Test block Nr. 3) is used to check test liquids during magnetic particle testing. The reference block is a disc with 2 types of natural cracks: bigger cracks are the result of stress corrosion, fine cracks are the result of the grinding. The reference block is permanently magnetized. The evaluation of magnetic particle suspensions is made by visual or other appropriated method of comparison of the indications e.g. measurement systems.



#### Application

- | According to EN ISO 9934-2
- | Procedure description see: [www.pfinder.com](http://www.pfinder.com)

#### APPROVALS & CONFORMITIES

The product conforms to these specifications / is suitable for the use according to:

Procedure description according  
EN ISO 9934-2

#### CONTENT OF DELIVERY

Reference test block no. 1 in case with certificate of conformity